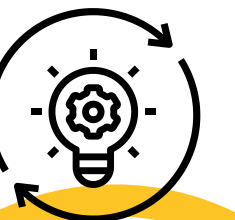
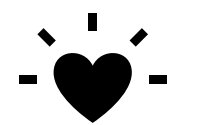
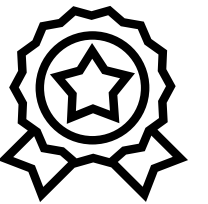


STRATEGIC PLAN 2023 - 2025

QUALITY PATHWAYS TO SUCCESS





Commitment to Knowledge and Humanity



WE BELIEVE

At Yeronga we celebrate student diversity and encourage individuality through leadership programs, tailored learning pathways and a nurturing learning environment. We model our values to students through high standards of personal accountability, social justice and global competence to ensure our students have authentic multicultural school experiences. We believe in equal access to education and pride ourselves on our deliberate engagement with cultural inclusion as a vibrant and dynamic learning community.

OUR HISTORY AT YERONGA

1960
THE BEGINNING.
YERONGA OPENS WITH
217 STUDENTS



1975
SPECIAL EDUCATION UNIT
ESTABLISHED



2007
FIRST
MULTICULTURAL DAY



2022
ACADEMIES AT
YERONGA

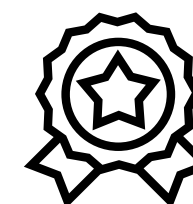


VISION AND VALUES

Our sustained focus on human connection and sense of belonging

We value culturally inclusive and responsive learning environments.

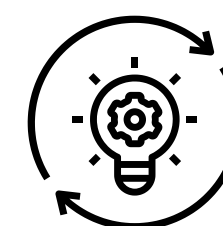
Yeronga State High School has always remained a beacon of light and hope for many migrant communities and families. Yeronga has a proud history as a specialist in supporting students from English and Second Language or Dialect backgrounds. This strong tradition remains within our culturally inclusive and responsive student learning environment with students from over 60 nationalities represented amongst our student population. Yeronga vision is Pathways to Success remains the commitment from staff to support all students to achieve their own individual pathway for the future.



QUALITY



HARMONY



SUSTAINABILITY

QUALITY PATHWAYS TO SUCCESS

Learner Agency

Pedagogy remains responsive to the learning needs of our students, enabling targeted individual student growth

95% A-C target
Academicly Agile

Elevate student learning growth through responsive pedagogical practices shaped by student voice and feedback.

Authentic Curriculum
Delivery for students:

Productive Partnerships
Local, Tertiary & Industry

Rigorous professional mentoring, coaching and co-teaching practices to build on our exceptional workforce.

Transform Curriculum
through Virtual Reality

Familiarisation with version 9 Australian Curriculum, exploring curriculum pathways, responding to QCAA Senior Syllabus revisions and work readiness in Vocational Education and Training.

Experienced and Capable Staff

Align our Explicit Instruction pedagogical practices with our signature practice of Teaching in English in Multilingual Classrooms (TEMC).

Commitment to Knowledge and Humanity



QUALITY PATHWAYS TO SUCCESS

Culturally Inclusive:

Evolve our pedagogical practice to align with principals of inclusion, health and wellbeing to ensure every student is globally connected and has access to a world class education.

Global Competence

Activate cultural capital from curricular and co-curricular programs to advance global competence and promote an improved sense of belonging for all students.

Student Congress

Remain culturally inclusive and acknowledge cultural appropriation and appreciation for a vibrant learning community.

Responsive Learning Environments:

Deliver an inclusive academic and vocational pathway that meets the needs of our student community.

Tailored Pathway Support

Sustain and cultivate new and existing partnerships with community and not-for-profit agencies to improve community wellbeing and learner engagement.

50% A-B in
Effort & Behaviour
Engagement

Deliver equitable educational environments to maintain high levels of consistent behaviour expectations.

Commitment to Knowledge and Humanity



QUALITY PATHWAYS TO SUCCESS

**Resilient and adaptive
21 century learners:**

Improve academic agility through
a growth mindset, SMART
academic and pathway goals,
academic conferencing and
development of micro-credential
skills for the future

Student Learning Growth

Commit to improved
environmental sustainability
working in partnership with internal
and external organisations.

Environmental & Workplace
Sustainable Practices

Commitment to Knowledge and Humanity

Work in partnership with external
organisations and community
groups to deliver active diverse
co-curricular programs.

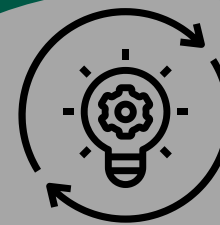
Employee Value Proposition –
Our Commitment to
Service Delivery

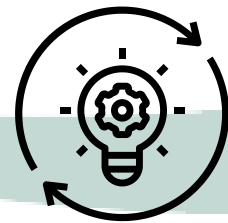
Develop and retain excellent
teachers who value social justice,
global competence and culturally
and linguistically diverse learners.

Learner Agency

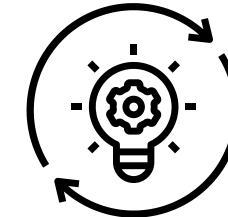
Develop agile, resilient, 21st
century learners by eliciting
student voice to engage students
as active partners, responsible for
their learning and progress.

SUSTAINABILITY
Developing Agile, Resilient
and Adaptive 21st Century
Learners





Our Success Indicators



Student success is characterised by learning, growth and experience. Our students value their own learning progression because they:

- Understand and communicate what they are learning, what success looks like and how they use feedback to progress their learning.
- Commit to an informed learning progression after completing SMART Goals and engaging in Academic Conferencing.
- Acknowledge student's role, voice and contribution to value service learning and contribute to a harmonious school community.
- Articulate learning commitment where quality, harmony and sustainability guide student expectations.

Teachers elevate Quality Pathways to Success through our unified approach to:

- Understand the implication of version 9 of Australian Curriculum through explicit teaching of Learning Intentions and Success Criteria with Global Competence Framework.
- Elevate our engagement with student data to identify, track and remain responsive to the learning needs of all students.
- Implement collegial engagement processes and co-teaching opportunities to model lifelong learning, productive collaboration and support to engaging and responsive pedagogical excellence.
- Work in partnership with parents and community stakeholders to improve community confidence in the outcomes and service delivery achieved by staff.
- Consistent and supportive behaviour and engagement processes are maintained to improve school culture and harmony.
- Embrace diversity and activate cultural capital from curricular and co-curricular programs, measured through videography of activities.

School leaders sustain an engaged and productive workforce to achieve Quality Pathways to Success for all students. :

- Develop the professional capability of teachers to quality assure student learning outcomes through professional learning communities.
- Articulate leadership actions and practices to elevate staff performance and capability to deliver academic outcomes for all students.
- Sustainability of productive partnerships with parents and community stakeholders to innovate authentic learning experiences for students.
- Cultivate a culture of sustainable workplace practices to reduce our carbon footprint and remain focused effective decision making on environmental issues.
- Improve staff confidence and digital capability to transform service delivery for 21st Century learners.

The background is a map of the Turrbal and Yuggera regions. The map shows geographical features like water bodies and land areas, with labels for 'Turrbal' and 'Yuggera'. Overlaid on the map are several decorative elements: a teal shape in the top left, a dark green shape in the top right, a yellow shape on the right side, and a yellow and dark green shape in the bottom left. A thick black line runs diagonally across the map. The title 'QUALITY PATHWAYS TO SUCCESS' is centered in a large, bold, dark teal font.

QUALITY PATHWAYS TO SUCCESS